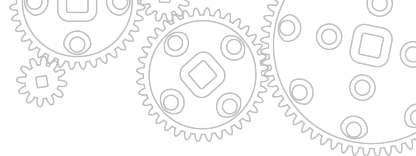
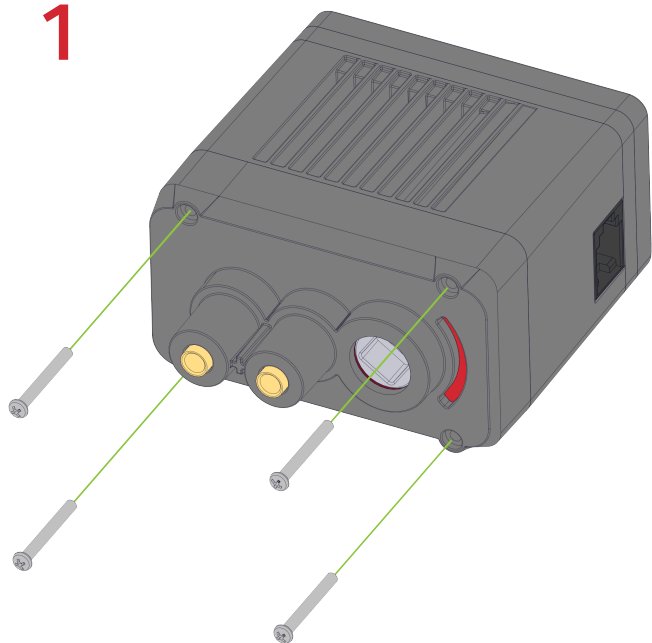


# Changing Gear Sets with V5 Smart Motors

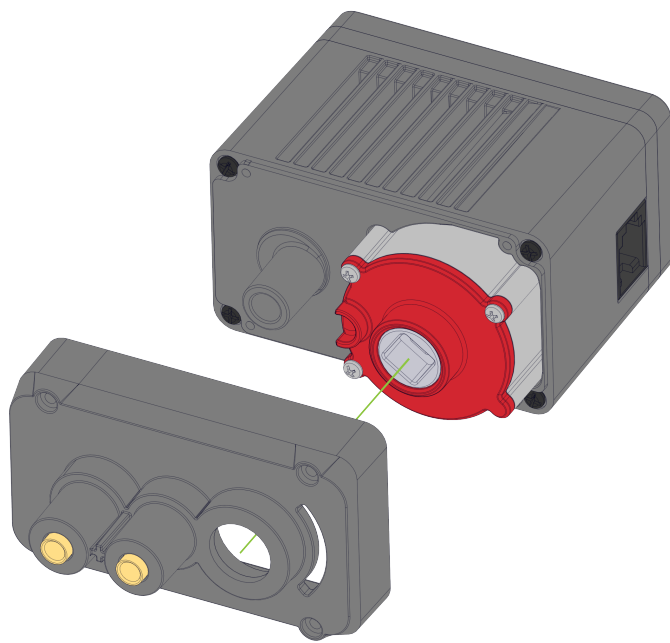


1



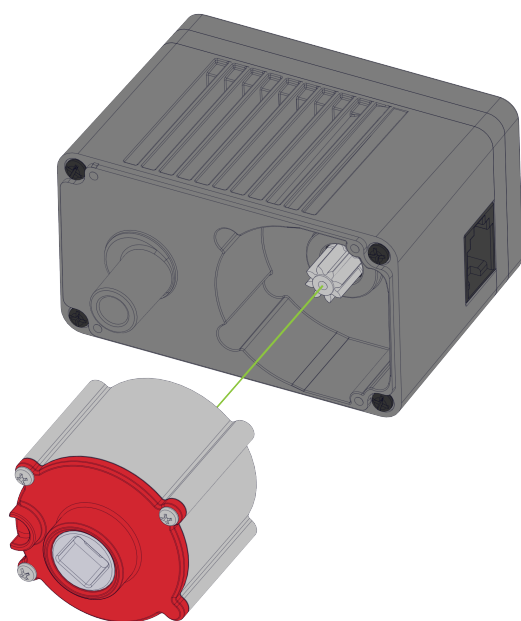
Remove (4) screws from motor housing.

2



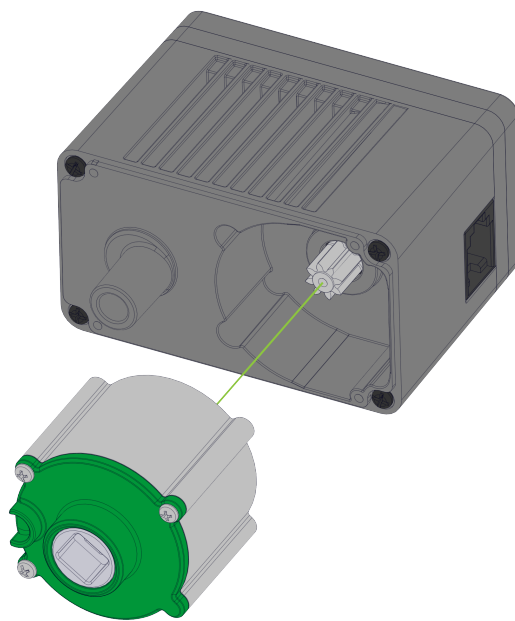
Remove cover from motor housing.

3



Remove gear cartridge from motor housing.

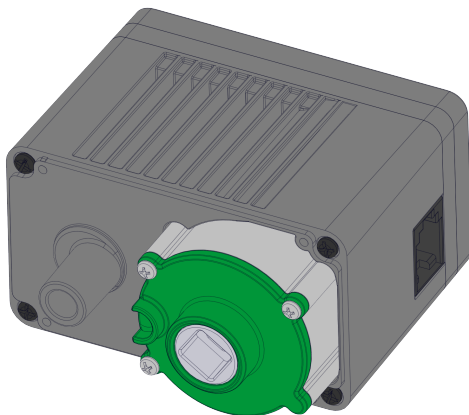
4



Insert new gear cartridge into motor housing.

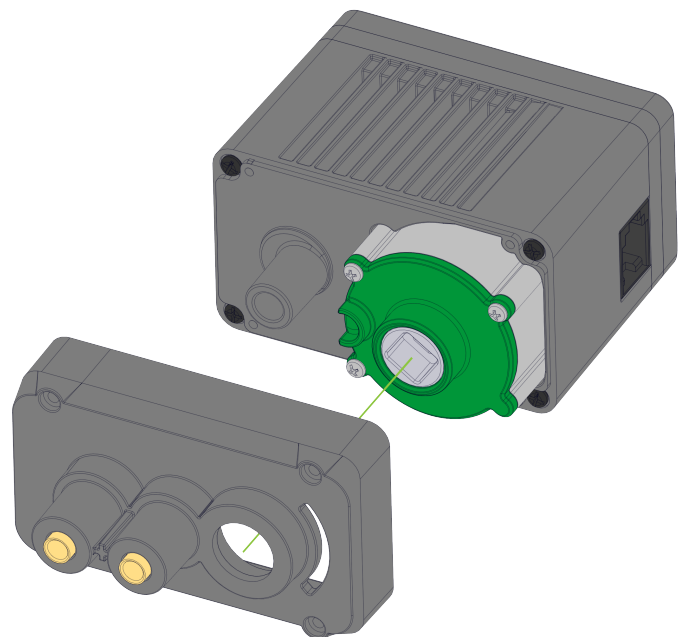


5



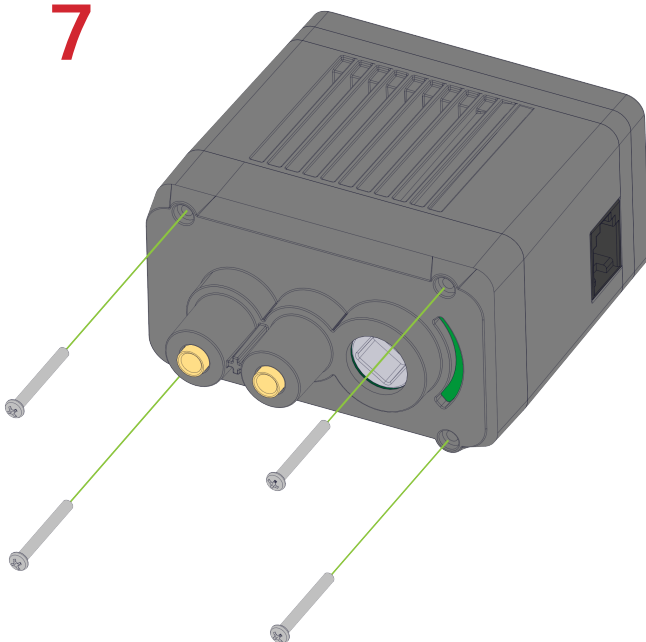
Ensure gear cartridge is seated properly.

6



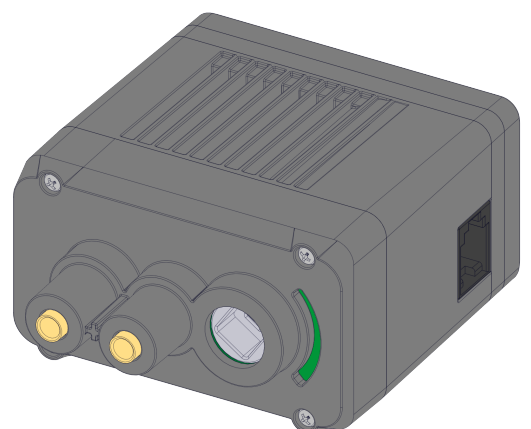
Replace cover for motor housing.

7



Insert (4) screws into motor housing.

8



Tighten screws, and complete!